



**“What makes a space truly remarkable—its design or its comfort?”**



**MJJI**  
hygiene with care





**At Mount Jubilant Interiors, we believe it's both. That's why we combine breathtaking interior design with state-of-the-art HVAC solutions to create spaces that are as beautiful as they are comfortable.**

hygiene with care



# MOUNT JUBLIANT INTERIORS PVT. LTD.



**MJI**

**hygiene with care**

# About Us

At Mount Jubliant Interiors, we specialize in creating stylish, functional spaces paired with advanced HVAC solutions. Our expertise lies in delivering seamless interior designs and climate control systems that enhance comfort and aesthetics. With a focus on innovation, quality, and sustainability, we transform your spaces into personalized havens of elegance and efficiency.





# OUR PILLARS

## **Vipin Pandey**

**The Industry Veteran- 30+ years of HVAC mastery**

- Former Johnson Control Hitachi leader
- Driving innovation since 1989

## **Parveen Sharma**

**The Strategic Pioneer- 30+ years of excellence in HVAC**

- Planning & execution specialist
- Transforming visions into reality

## **Varun Apan**

**The Dynamic Entrepreneur- 16 years of industry expertise**

- Sales & business development expert
- Innovation catalyst

# OUR IN-HOUSE BRANCHES

**DELHI/NCR**

**UTTAR  
PRADESH**

**PUNJAB**



hygiene with care

**UTTARAKHAND**

**Empowering businesses across India with cutting-edge climate solutions.**



# INTERIOR DESIGNING CONTRACTOR

1. RESIDENTIAL PROJECTS

2. COMMERCIAL PROJECTS

3. RETAIL PROJECTS

RESIDENTIAL

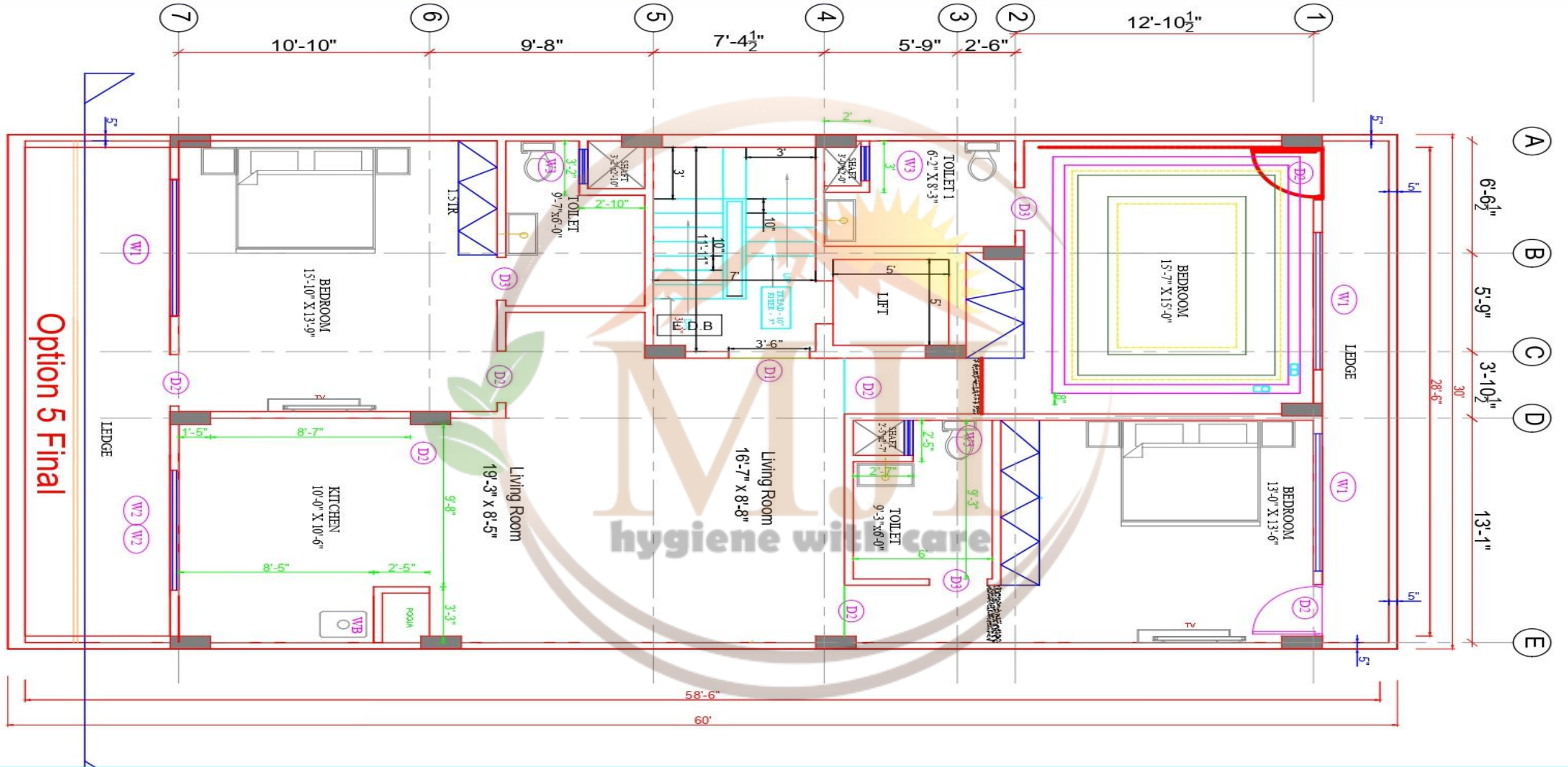
RESIDENTIAL

COMMERCIAL

RETAIL



# LAYOUT OF SEC-4 GURUGRAM





# GLIMPSE OF OUR PROJECTS-RESIDENTIAL



hygiene with care

# GLIMPSE OF OUR PROJECTS-COMMERCIAL



# GLIMPSE OF OUR PROJECTS-RETAIL



# Next up: HVAC



# ADVANCED HVAC SYSTEM



## VRF Systems

- Variable Refrigerant Flow technology
- Optimal energy efficiency
- Smart climate control



## Ductable AC Systems

- Centralized cooling
- Ceiling mounted



## Chiller Solutions

- Industrial Grade cooling
- Precision temperature control
- Sustainable operations



## Precision Air Conditioning

- Data center specialization
- Critical environment control
- 24/7 reliability

# SOLUTIONS

## HVAC COMPREHENSIVE SOLUTIONS

- **Elevating comfort, health, and efficiency with Consistent Brilliance.**
- **A tailored and long term approach to manage indoor climate, lowering operational cost and promoting energy conservation.**

## ENERGY EFFICIENCY EXPERTISE

- **Reducing costs and impact with energy-efficient upgrades and advanced air purification.**
- **Supports sustainability goals by cutting down on carbon footprints and provides long term environmental benefits.**

## CUSTOMIZED COMFORT WITH PEACE OF MIND

- **Unique HVAC designs for your spaces with assured comfort, excellent air quality with comprehensive warranties.**

# GLIMPSE OF OUR HVAC PROJECTS

Our cutting-edge solution marries comfort and sustainability, slashing costs and environmental impact while delivering pristine indoor air quality.

- IKIGAI BY CDH-  
Defence Colony
- ZAZA-GK-I
- LOCA- GK-I
- HOUSE OF  
WOK-GK-I

- HCL –Noida
- IXIGO- Gurugram
- ROYAL HABITAT  
CENTRE- Noida
- BHAGIRATHI  
PALACE-  
Haridwar

- RCUBE MONAD-  
Noida-  
INTUNES,  
SHOPPERSTOP,  
FOODCOURT,  
HOMESTOP
- ZUDIO-Noida
- OH MY GAMES!-  
Ludhiana

hygiene with care

# GLIMPSE OF CAFES/RESTAURANT PROJECT



ZAZA

LOCA



IKIGAI





# GLIMPSE OF OFFICES/HOTELS

**BHAGIRATHI PALACE**



**HCL**



**IFFCO SADAN**



**IXIGO**



**ROYAL HABITAT CENTRE**

# GLIMPSE OF RETAIL PROJECT



**SHOPPERSTOP**



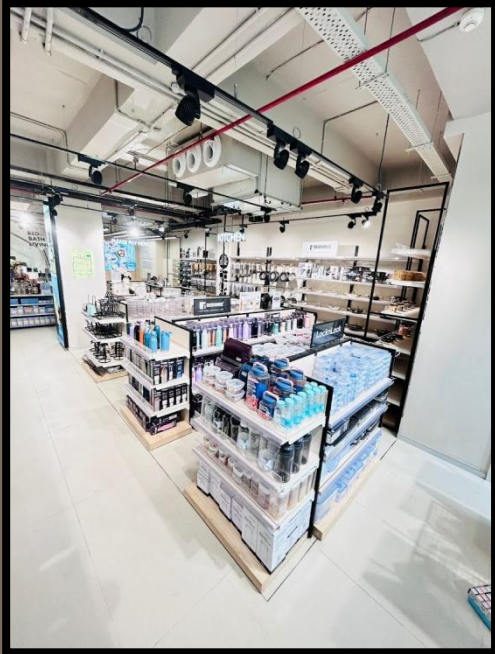
**ZUDIO**



**OH MY GAMES!**



**IKIGAI**



**HOMESTOP**

# FIRE FIGHTING AND ALARM – ZUDIO, KALINDI KUNJ



Firefighting and alarm systems work hand-in-hand to enhance building safety and ensure a rapid response to emergencies. Our company is committed to delivering top-tier fire protection solutions that prioritize safety, compliance, and reliability. We provide end-to-end services—from installation to maintenance—ensuring that each system meets the highest standards of performance and regulatory compliance.

# OPERATIONAL SETUP IN PROGRESS

- 
- Raymond's- CP
  - Wakefit- Kirti Nagar
  - Funcity- Dwarka
  - Lotus- Pitampura
  - Miss Nora- Noida
  - Raymond's- Lajpat Nagar
  - Café Delhi Heights-Noida
  - Reliance Azortea-Gurugram
  - Apollo- Parparganj
  - Raymond's- Gajrola
  - Café Delhi Heights- Rohini
  - Wakefit- Noida
  - P & P Foods- Haridwar
  - ITC- Rishikesh
  - M3M- Gurugram
  - ICICI Banks

# ASSOCIATED LABELS



# ASSOCIATED LABELS



# POST SALE SUPPORT

## **ANNUAL MAINTAINENCE CONTRACTS**

For peak HVAC performance and clean air, choose our annual maintenance contracts. Our certified technicians ensure efficiency and air quality.

## **EMERGENCY REPAIRS**

Quick response for breakdowns or urgent repairs.

## **SYSTEM UPGRADES**

Advice on energy efficient upgrades or expansion.

## **SEASONAL TUNE-UPS**

Adjustments tailored to seasonal requirements.



# CONNECT WITH US



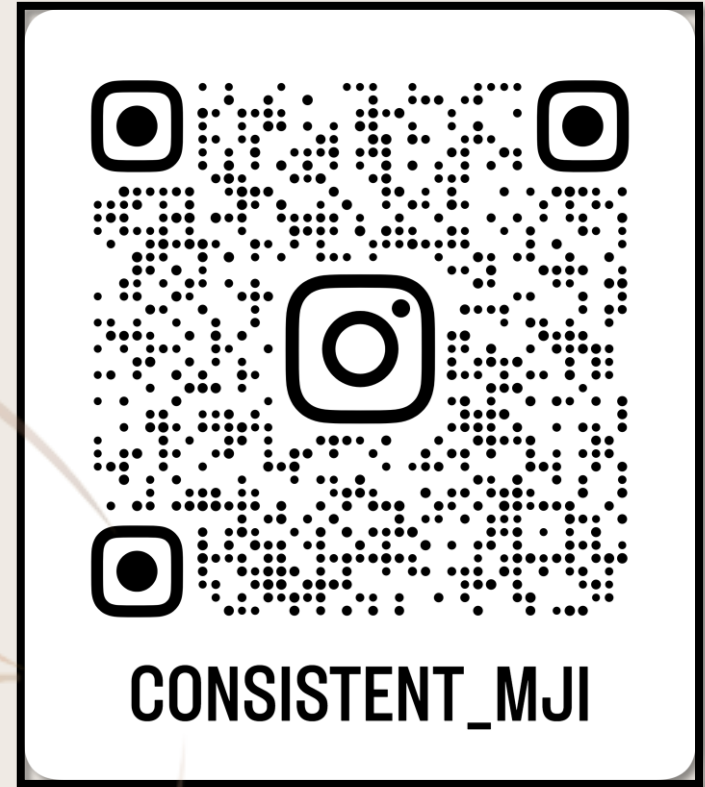
- **+919899994124- Varun Apan**
- **+919313410285- Vipin Pandey**
- **+919650517269- Parveen Sharma**



- **team@mji.ind.in**



**N-6 Greater Kailash Part-1 Market  
New Delhi -110048**



[https://www.instagram.com/consistent\\_mji/?utm\\_source=qr&igsh=MWVwazVyNTZkY3h6eg%3D%3D#](https://www.instagram.com/consistent_mji/?utm_source=qr&igsh=MWVwazVyNTZkY3h6eg%3D%3D#)





**MJI**

**hygiene with care**

# Thank you

**MJI**  
INTERIORS

A modern interior scene featuring a beige armchair, a round coffee table, a floor lamp, and a large framed artwork with the text 'Thank you' and 'MJi INTERIORS'. The room is decorated with various vases, a potted plant, and a small table with a lamp. The overall aesthetic is warm and minimalist.